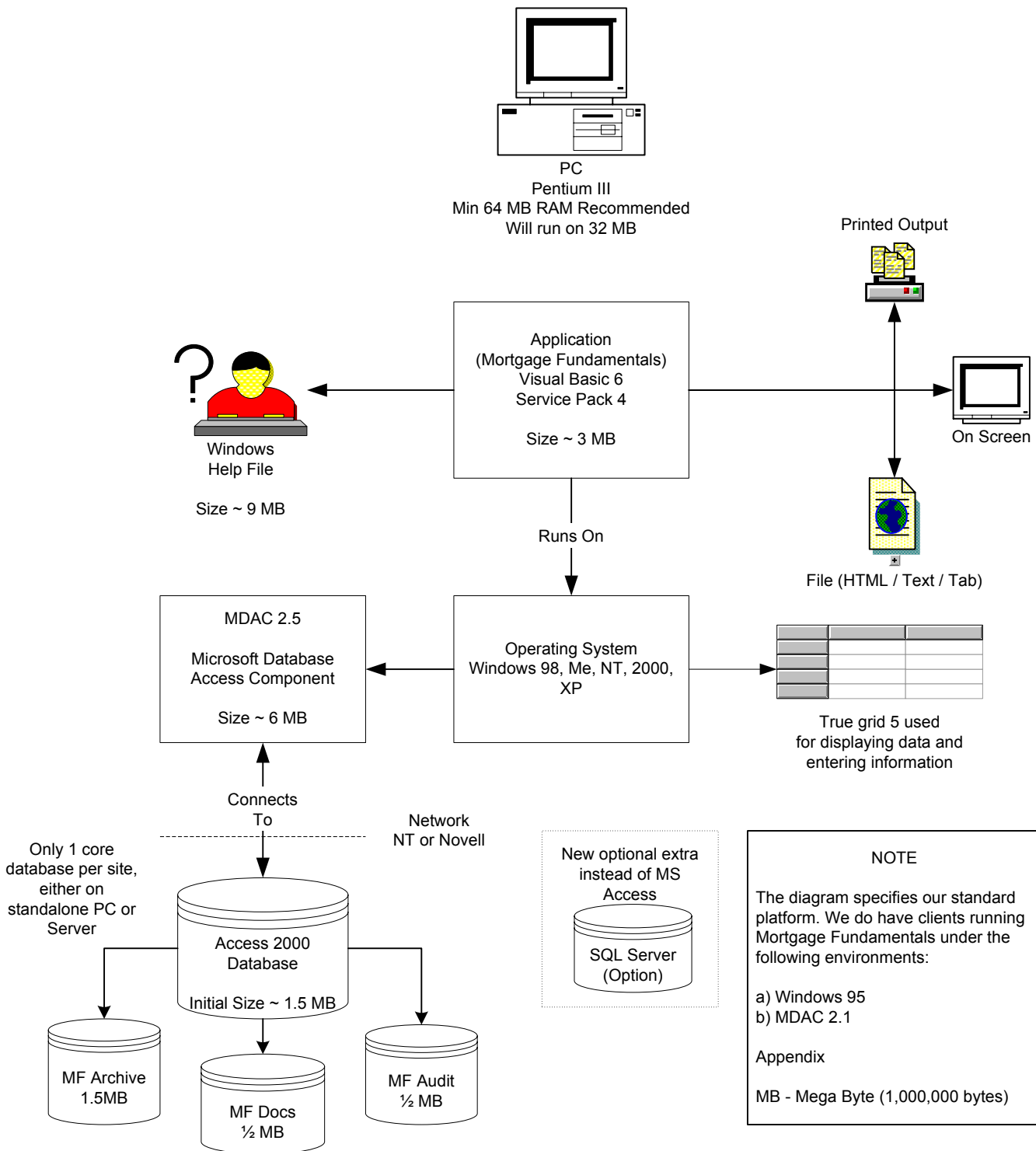


MORTGAGE FUNDAMENTALS



PRODUCT MEDIA



Product supplied on CD

Standard windows setup
Contains all components required to run software
No additional licenses required (Unless using MS SQL Server)



Updates via Floppy disk, CD or Email

5 Types of updates available (c+d+e loaded via application)



- a) Application update (Standard every 2-3 months)
- b) Help file update (Every major release)
- c) Lender information update (Standard monthly - subscription)
- d) Interest rate update (Standard monthly - subscription)
- e) DTA rates (Infrequent basis)

20th February 2003

PRODUCT SUPPORT

9 am - 5 pm Mon - Fri

Email / Phone support
Support included in cost of software
Super-user contact recommended on each site
Must have received training to get support

Mortgage Fundamentals Reports

Platform - Same as Mortgage Fundamentals

Size ~ 1.5MB

Case Transfer for Mortgage Fundamentals

Platform - Same as Mortgage Fundamentals

Size ~ 1.5MB